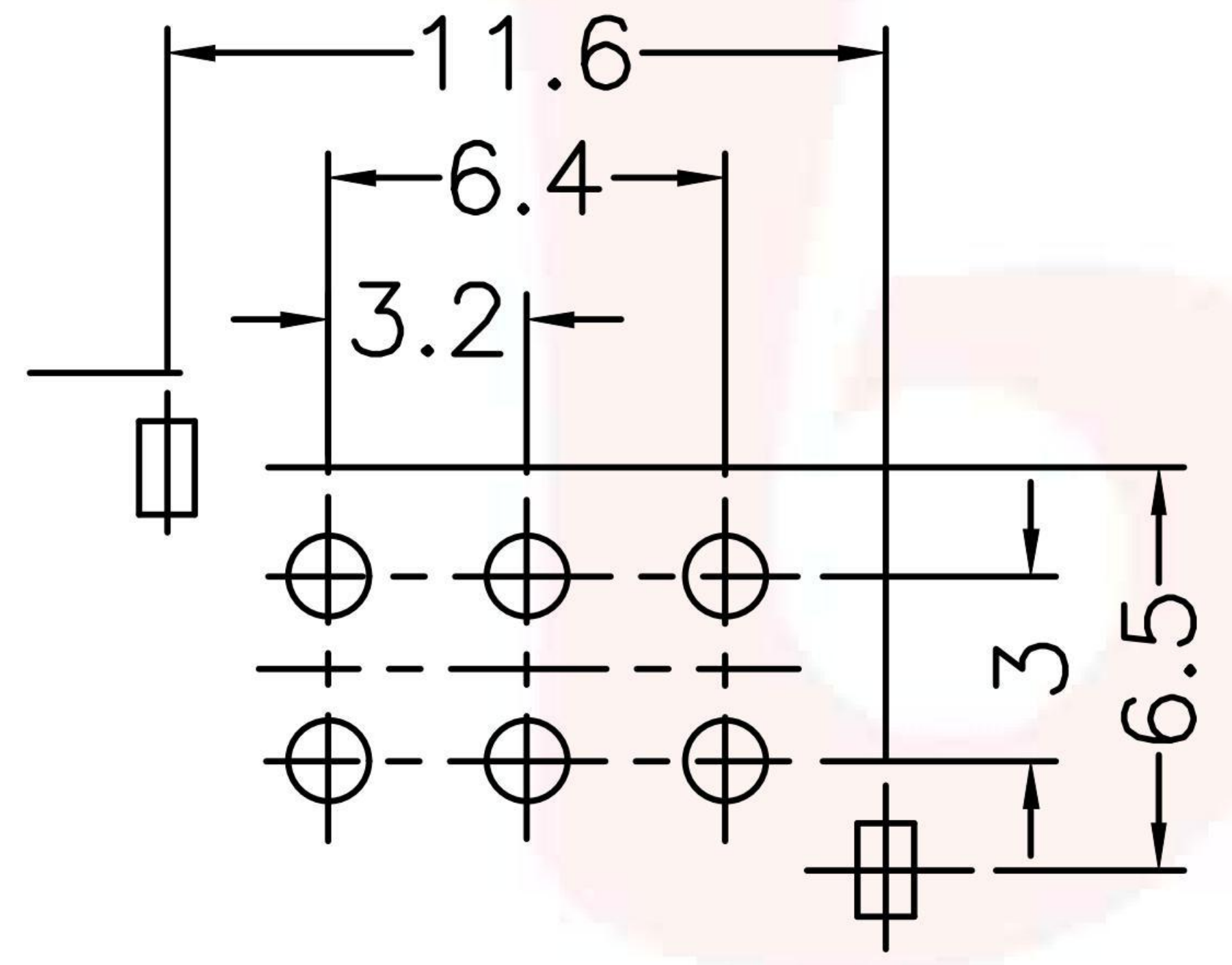
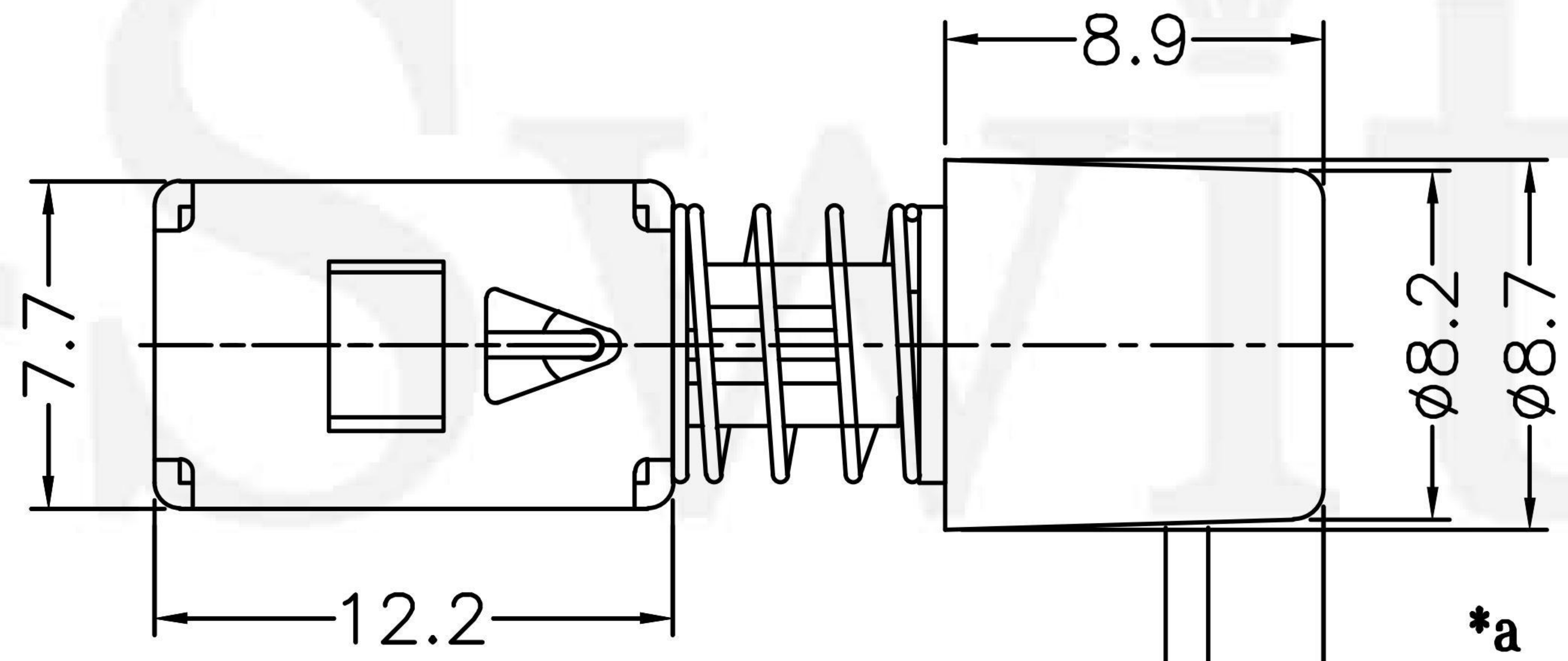


PS-22F02XX

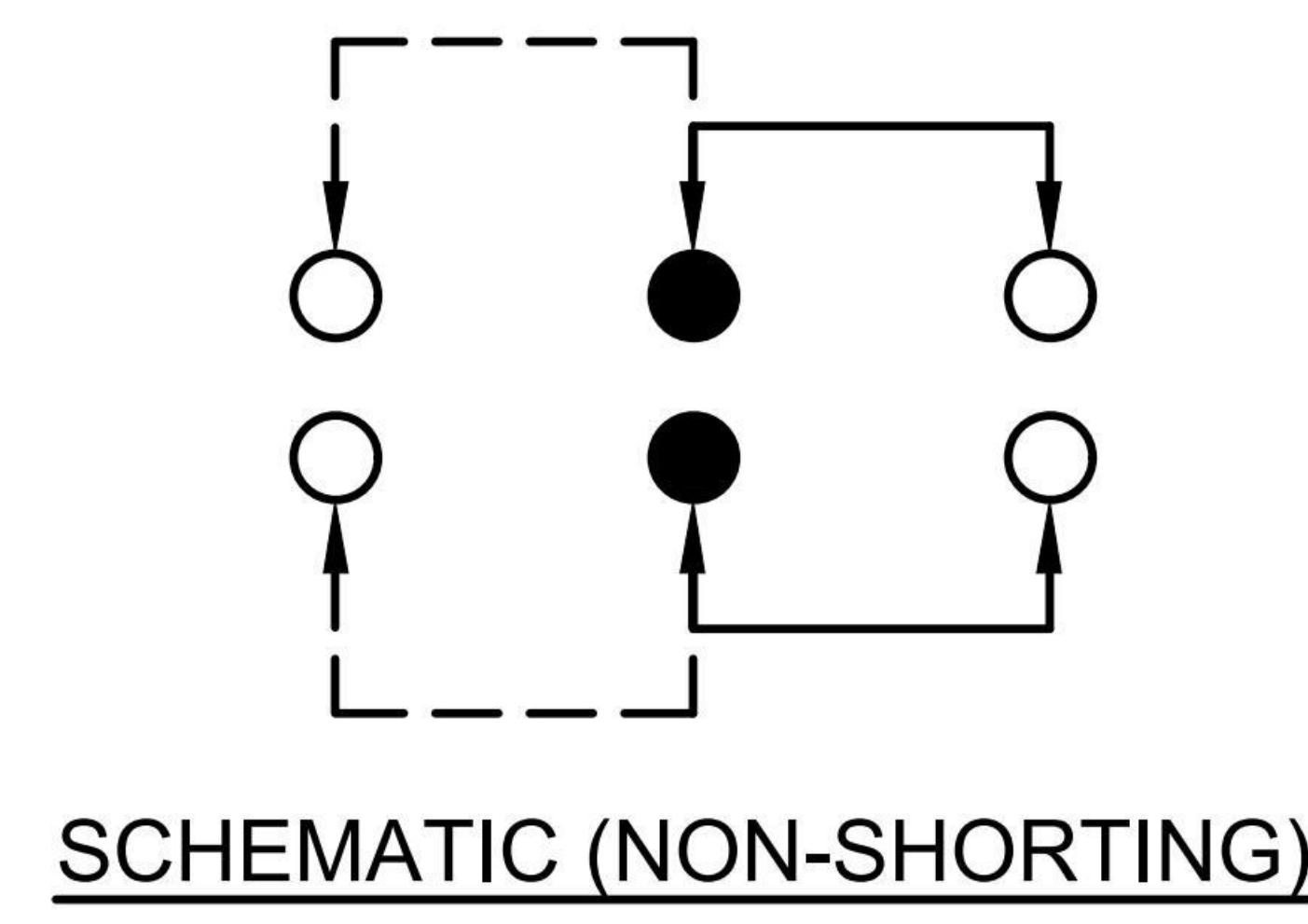
PUSH SWITCH
 G-Switch P/N
 N=NO LOCK
 L=LOCK
 A=黑色
 B=红色
 C=蓝色
 D=其它



P.C.B LAYOUT
 BOTTOM VIEW



G-Switch Specification:
 Electrical Specifications: 0.5A 30VDC
 Contact Resistance : ≤100mΩ
 Insulation Resistance: ≥100MΩ DC125V
 Withstand Voltage: AC125V 1 minute
 Operating Temperature: -25°C~+65°C
 Storage Humidity: ≤85%RH
 Electrical Life: 10,000
 Mechanical Life: 100,000



	G-Switch Electronic (HongKong) CO.,Ltd.		
	DESIGN Yvette Chen CHECKED APPROVED http://www.dg-switch.com TEL:0769-82388879	DATE 2019.05.29 DATE DATE	Molde code: PS-22F02XX REV.: X1 SCALE: 4:1 SHEET: 1/1
Unless otherwise specified, Tolerance: X. ±0.30 X.x ±0.20 X.xx ±0.15 X.xxx ±0.10 Angles ±3°	UNIT: mm 		