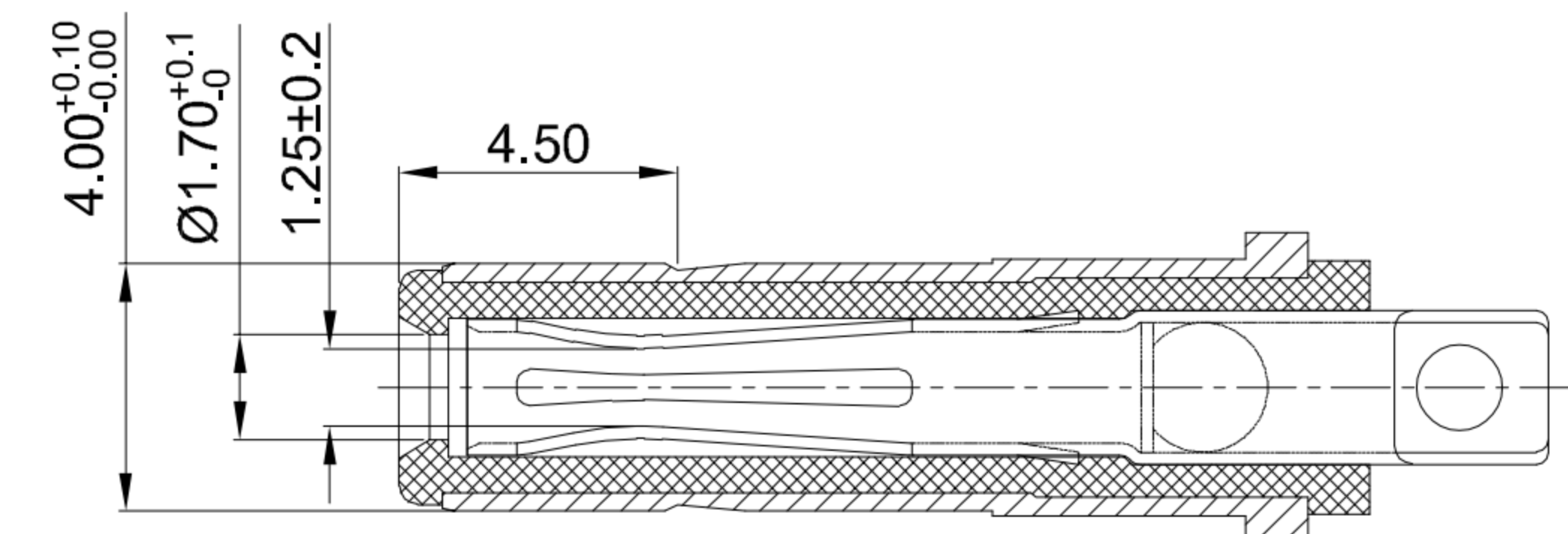


CIRCUIT DIAGRAM

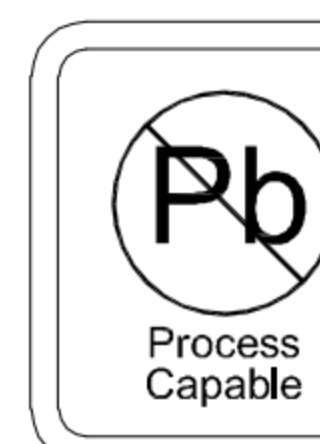


MATING PLUG Ø4.0xØ1.7mm

**G-Switch Specification:**

1. Operating temperature range: -40°C ~ +85°C
2. Rated load: 5A.20V DC
3. Insulation resistance: 100MΩ min
4. Withstand voltage: 500V AC/min
5. Contact resistance: 30mΩ max
6. Durability cycle: 10000 Cycles
7. Insertion force: 2.0kgf Max. (Initial)/2.0kgf Max. (Final)
8. Extraction force: 1kgf~3.0Kgf(Initial)/0.7kgf~3.0Kgf(Final)

A	HOUSING	HIGH TEMPERATURE PLASTIC	PA10T BLACK
B	SHELL	COPPER ALLOY	Ni PLATING
C	CENTER PIN	COPPER ALLOY	Sn/Ni PLATING
D	STOPPER	STAINLESS STEEL	---
NO.	PART NAME	MATERIAL	REMARK



**RoHS**  
Compliant  
EU RoHS Standards



SCALE: 1:1 UNIT: mm  
SIZE: A4

Title: Horizontal DC Power Jack 4017  
Solder Type L=11.0 Ø1.65mm

Unless otherwise  
General tolerance:  
X ±0.50  
X.x ±0.30  
X.xx ±0.20  
X.xxx ±0.10  
X.° ±3°

Molde Code: DC-S002A-D0165-5A

DRAWN	CHECKED	APPROVED	DATE
Xia	Chen	Chen	2023.02.01



REV: A0 SHEET: 1/1