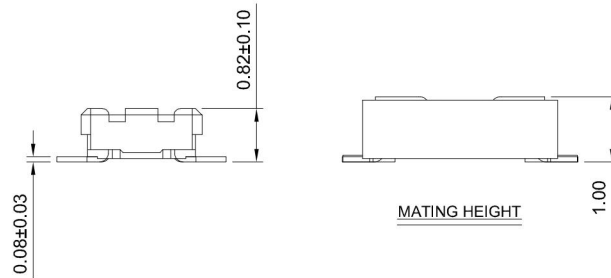
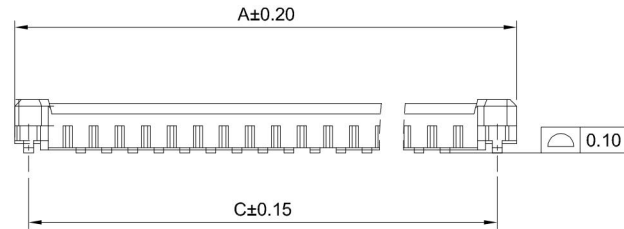


RECOMMEND PCB LAYOUT  
TOLERANCE:±0.05



MATING HEIGHT



GT-B0402 M S V 08 -XX X XX 01

G-Switch

Series No

M-Male

Termpoint  
S-SMT

Angle  
V-180°

Terminal Plating  
11-All Au G/F  
05-Au 15u"

Housing Colour  
B-Black

Pin Q' PY  
10-60

Height  
08-0.82mm

**G-Switch Specification:**

- 1.Current rated: 0.3A AC/DC
- 2.Voltage rating: 60V AC/DC
- 3.Withstanding voltage: 150V AC
- 4.Contact resistance: 90mΩ max
- 5.Insulation resistance: 100MΩ min
- 6.Durability cycle: 50Cycles
- 7.Removal force: 0.04kgf/Pin min
- 8.Operating temperature range: -55°C ~ +85°C

**Ordering Information:**

Circuit	Dimensions			Circuit	Dimensions		
	A	B	C		A	B	C
10	3.80	1.60	3.20	34	8.60	6.40	8.00
20	5.80	3.60	5.20	40	9.80	7.60	9.20
24	6.60	4.40	6.00	50	11.80	9.60	11.20
30	7.80	5.60	7.20	60	13.80	11.60	13.20

3	SOLDER TABS	PHOSPHOR BRONZE	MATTE TIN
2	CONTACT	PHOSPHOR BRONZE	ALL Au G/F
1	HOUSING	LCP,94V-0	BLACK
NO.	PART NAME	MATERIAL	REMARK



SCALE: 1:1 UNIT: mm  
SIZE: A4

Unless otherwise  
General Tolerance:

X ±0.40  
X.x ±0.30  
X.xx ±0.20  
X° ±5°  
X.x° ±3°

Title: BTB 0.4mm Pitch 180° H0.82mm Dual Rows  
SMT Type Mate Connector

Molde Code: GT-B0402MSV08-XXXXX01

DRAWN	CHECKED	APPROVED	DATE
Hu	Chen	Chen	2022.12.28



REV: A0 SHEET: 1/1