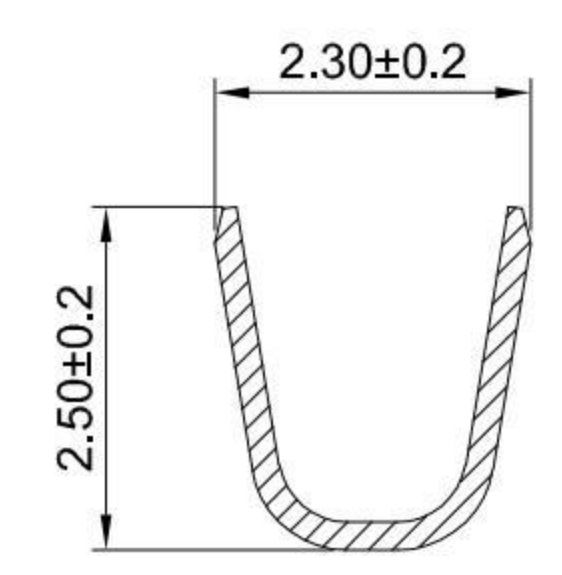
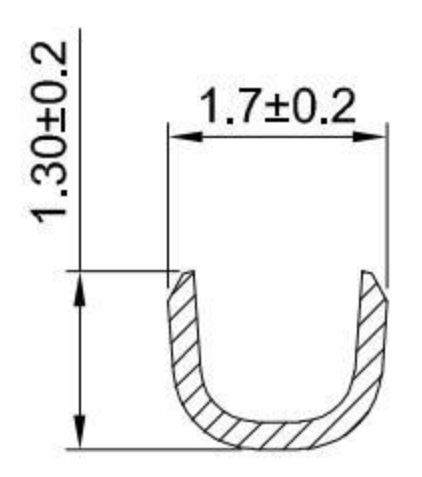


GT-A2001 T F -X XX 1

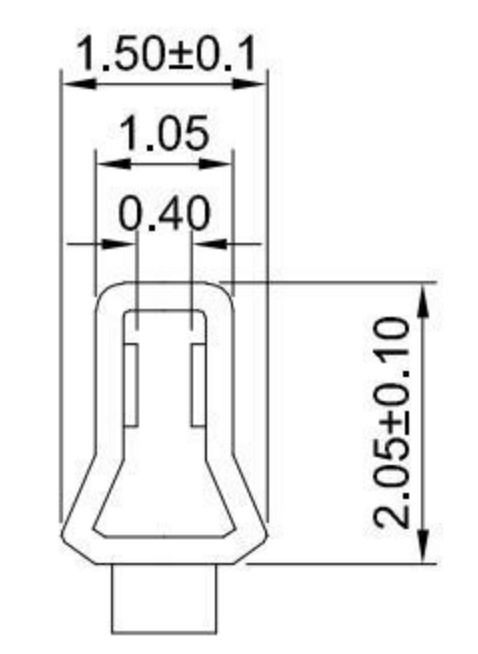
- G-Switch**
- Series No**
- Connector**
T-Terminal
- Terminal Plating**
BT-Bright Tin
- Metal**
P-Phosphor bronze
- F-Female**



SECTION:A-A



SECTION:B-B



SECTION:C-C

G-Switch Specification:

1. Current rated: 2.0A AC/DC
2. Voltage rating: 100V AC/DC
3. Withstanding voltage: 800V AC
4. Contact resistance: 10mΩ max.
5. Insulation resistance: 1000MΩ min
6. Durability cycle: 30Cycles
7. Removal force: 1.20kgf/Pin min
8. Operating temperature range: -25°C ~ +85°C

GT-A2001TF-PBT1	Phosphor bronze	Bright Tin	AWG#24~30	1.60mm(Max)	12000
Part NO	Material	Plating	Wire Size	Insulation O.D	Reel/PCS



SCALE: 1:1	UNIT: mm
SIZE: A4	
Unless otherwise General Tolerance:	
X	±0.40
X.x	±0.30
X.xx	±0.20
X*	±5°
X.x°	±3°

Title: Terminal 2.00mm Pitch PH Crimp Style			
Molde Code: GT-A2001TF-XXX1			
DRAWN	CHECKED	APPROVED	DATE
Hu	Hu	Chen	2021.10.18



REV: A0	SHEET: 1/1
---------	------------