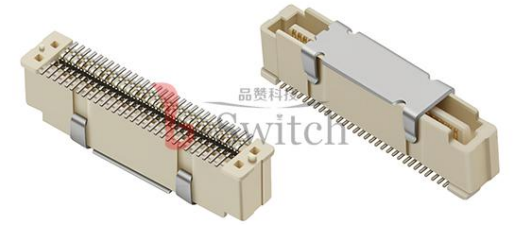
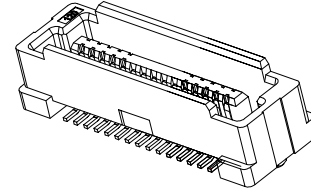


G-Switch Specification:

- 1.Current rated: 0.5A AC/DC
2. Voltage rating:100V AC/DC
- 3.Withstanding voltage: 500V AC
- 4.Contact resistance: 30mΩ Max.
- 5.Insulation resistance: 500MΩ min
- 6.Durability cycle: 50 Cycles
- 7.Removal force: 0.01kgf/Pin min
- 8.Operating temperature range: -40°C ~ +105°C



GT-B0805 M S V XX -XX X XX 01

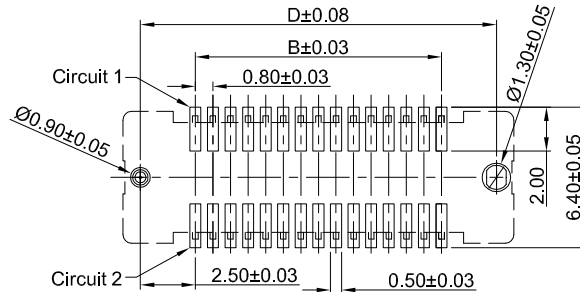
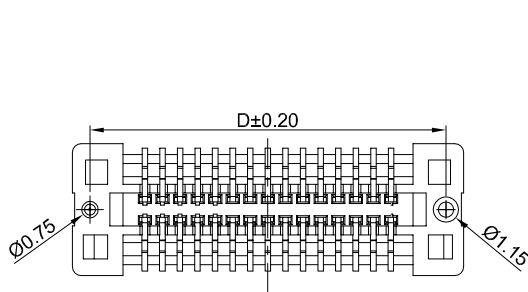
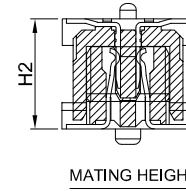
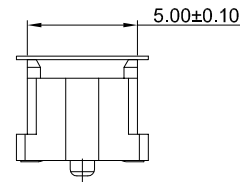
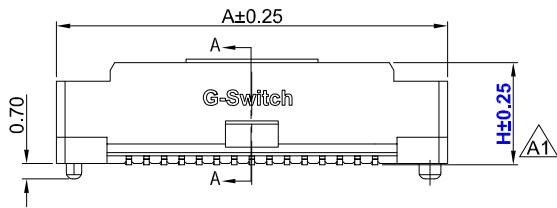
G-Switch
Series No
M-Male
Termpoint
 S-SMT
ANGLE
 V-180°

Terminal Plating
 11-ALL G/F(H4.7mm)
 01-Gold Flash On Contact Area

Housing Colour
 S-Nature

Pin Q' PY
 20~200

Height
 47-4.70mm
 57-5.70mm
 67-6.70mm



PCB REFERENCE DIAGRAM
 TOLERANCE:±0.05

MATING HEIGHT(H2)	PLUG (H.mm)	SOCKET (H1.mm)	MATING HEIGHT	PLUG (H.mm)	SOCKET (H1.mm)
5.00	4.70	3.70	13.00	4.70	11.70
6.00	5.70	3.70	14.00	5.70	11.70
7.00	6.70	3.70	15.00	6.70	11.70
8.00	7.70	3.70	16.00	7.70	11.70
9.00	4.70	7.70	17.00	4.70	15.70
10.00	5.70	7.70	18.00	5.70	15.70
11.00	6.70	7.70	19.00	6.70	15.70
12.00	7.70	7.70	20.00	7.70	15.70

NO.	PART NAME	MATERIAL	REMARK
2	CONTACT	PHOSPHOR BRONZE	ALL G/F OR Gold Flash On Contact Area
1	HOUSING	LCP,94V-0	Nature

Ordering Information:

Circuit	Dimensions(mm)					
	A	B	C	D	E	F
20	13.80	7.20	8.80	12.20	10.86	12.21
30	17.80	11.20	12.80	16.20	14.86	16.21



SCALE: 1:1 UNIT: mm
 SIZE: A4

Unless otherwise General Tolerance:
 X ±0.40
 X.x ±0.30
 X.xx ±0.20
 X° ±5°
 X.x° ±3°

Title: BTB 0.80mm Pitch 180° Dual Rows SMT Type Mate Connector

Molde Code: GT-B0805MSVXX-XXXXX01

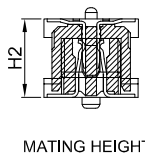
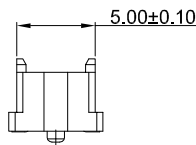
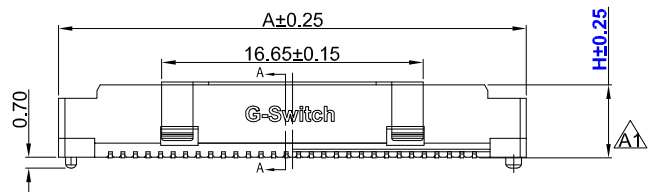
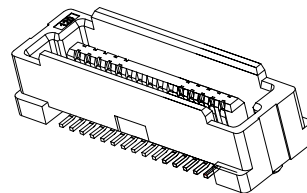
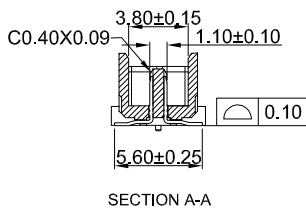
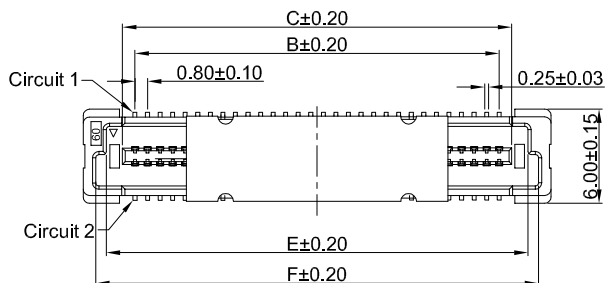
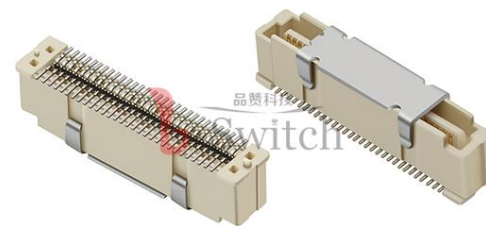
DRAWN	CHECKED	APPROVED	DATE
Hu	Chen	Chen	2026.01.20



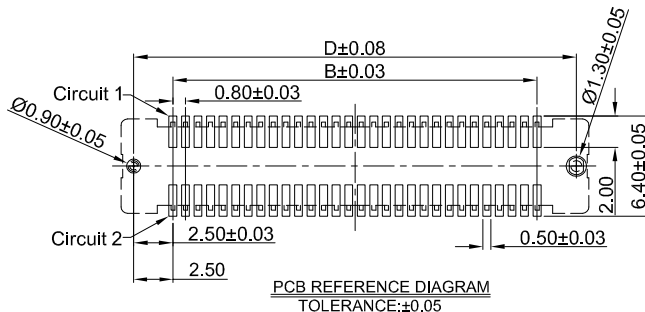
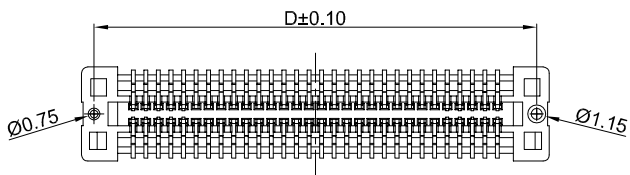
REV: A0 SHEET: 1/2

G-Switch Specification:

- 1. Current rated: 0.5A AC/DC
- 2. Voltage rating: 100V AC/DC
- 3. Withstanding voltage: 500V AC
- 4. Contact resistance: 30mΩ Max.
- 5. Insulation resistance: 500MΩ min
- 6. Durability cycle: 50 Cycles
- 7. Removal force: 0.01kgf/Pin min
- 8. Operating temperature range: -40°C ~ +105°C



MATING HEIGHT



GT-B0805 M S V XX -XX X XX 01

G-Switch

Series No

M-Male

Termpoint
S-SMT

ANGLE
V-180°

Terminal Plating

11-ALL G/F(H4.7mm)
01-Gold Flash On
Contact Area

Housing Colour
S-Nature

Pin Q' PY
20~200

Height
47-4.70mm
57-5.70mm
67-6.70mm

MATING HEIGHT	PLUG (H.mm)	SOCKET (H1.mm)	MATING HEIGHT	PLUG (H.mm)	SOCKET (H1.mm)
5.00	4.70	3.70	13.00	4.70	11.70
6.00	5.70	3.70	14.00	5.70	11.70
7.00	6.70	3.70	15.00	6.70	11.70
8.00	7.70	3.70	16.00	7.70	11.70
9.00	4.70	7.70	17.00	4.70	15.70
10.00	5.70	7.70	18.00	5.70	15.70
11.00	6.70	7.70	19.00	6.70	15.70
12.00	7.70	7.70	20.00	7.70	15.70

3	SPCC	SUS	NI
2	CONTACT	PHOSPHOR BRONZE	ALL G/F OR Gold Flash On Contact Area
1	HOUSING	LCP,94V-0	Nature
NO.	PART NAME	MATERIAL	REMARK

Ordering Information:

Circuit	Dimensions(mm)					
	A	B	C	D	E	F
40	21.80	15.20	16.80	20.20	18.86	20.21
50	25.80	19.20	20.80	24.20	22.86	24.21
60	29.80	23.20	24.80	28.20	26.86	28.21
80	37.80	31.20	32.80	36.20	34.86	36.21
100	45.80	39.20	40.80	44.20	42.86	44.21
120	53.80	47.20	48.80	52.20	50.86	52.21
140	61.80	55.20	46.80	60.20	58.86	60.21
160	69.80	63.20	64.80	68.20	66.86	68.21
180	77.80	71.20	72.80	76.20	74.86	76.21
200	85.80	79.20	80.80	84.20	82.86	84.21

SCALE: 1:1 UNIT: mm
SIZE: A4

Unless otherwise General Tolerance:
X ±0.40
X.x ±0.30
X.xx ±0.20
X" ±5°
X.x" ±3°

Title: BTB 0.80mm Pitch 180° Dual Rows SMT Type Mate Connector

Molde Code: GT-B0805MSVXX-XXXXX01

DRAWN	CHECKED	APPROVED	DATE
Hu	Chen	Chen	2026.01.20



REV: A1 SHEET: 2/2

